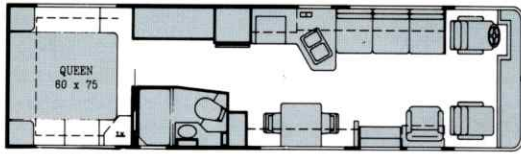
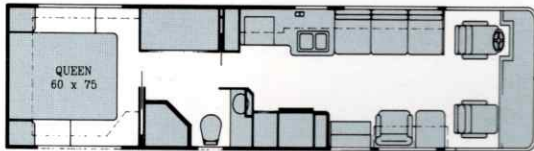


# HMC Models

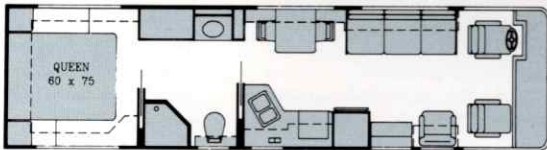
HMC models are aerodynamic traditionally-styled basement and widebody basement coaches featuring a mid-side entry door and standard driver's door. (See page 11 for complete specification listing.)



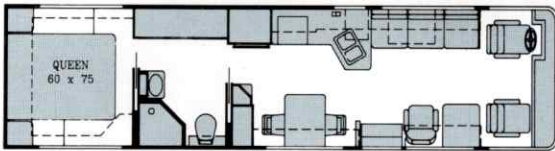
**BP/WBP-330**



**BP/WBP-334**

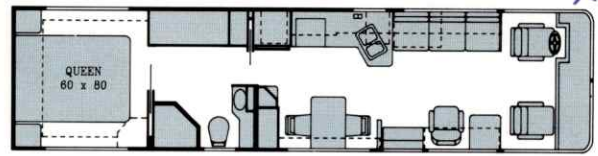


**BP/WBP-343**

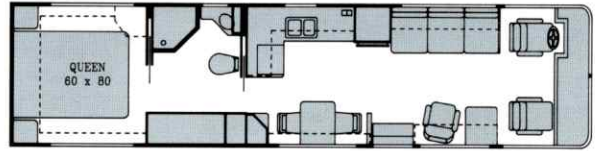


**WBP-358**

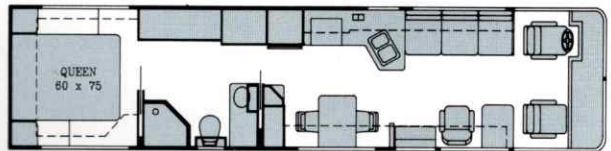
*Twin beds are available on all models.*



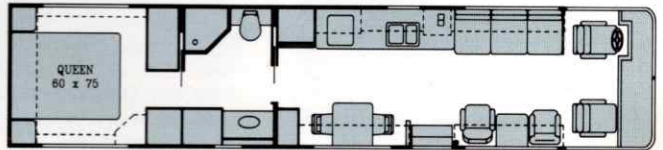
**BP/WBP-363**



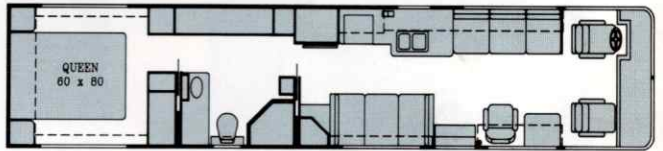
**BP/WBP-364**



**WBP-378**



**WBP-400**



**WBP-405**



**Aerosport**



**Aerosport II**



**HMC**

## HMC's Limited Edition



HMC's Limited Edition coaches offer you an even greater variety of features for comfort, elegance and style. Available on Aerosport, Aerosport II and HMC models, this luxury package includes bold new exterior paint graphics, integrated baggage compartments, designer sofa, 19" color TV with inverter and VCR, leather barrel chair, indirect lighting in the saloon area, plank galley flooring in solid hardwood, and beveled mirrors in the bedroom. Add to all this the already long list of HMC standard features, and you have one of the most luxurious motorhomes on the road today.

# Coach Dimensions and Specifications

	Aerosport				Aerosport II			HMC Models					
	APS-358	APS-363 APS-364	APS-378	APS-402 APS-405	A2BPS-330 A2BPS-333	A2BPS-341 A2BPS-344	A2BPS-363	BP/WBP-330 BP/WBP-334	BP/WBP-343	WBP-358	BP/WBP-363 BP/WBP-364	WBP-378	WBP-400 WBP-405
<b>GILLIG/CAT 3116</b>													
• 215 H.P.-24,980 GVWR	N/A	N/A	N/A	N/A	STD	STD	STD	STD/N/A	STD/N/A	NA	STD/N/A	N/A	N/A
• 250 H.P.-25,600 GVWR	STD	STD	N/A	N/A	OPT	OPT	OPT	OPT/STD	OPT/STD	STD	OPT/STD	N/A	N/A
<b>GILLIG/CAT 3176</b>													
• 325 H.P.-31,000 GVWR	OPT	OPT	STD	STD	OPT	OPT	OPT	OPT	OPT	OPT	OPT	STD	STD
<b>GILLIG/CUMMINGS 6CTA8.3</b>													
• 250 H.P.-25,600 GVWR	OPT	OPT	N/A	N/A	OPT	OPT	OPT	OPT/STD	OPT/STD	OPT	OPT/STD	N/A	N/A
• 300 H.P.-28,000 GVWR	OPT	OPT	OPT	OPT	OPT	OPT	OPT	OPT	OPT	OPT	OPT	OPT	OPT
• 300 H.P.-31,000 GVWR	OPT	OPT	OPT	OPT	OPT	OPT	OPT	OPT	OPT	OPT	OPT	OPT	OPT
<b>SPARTAN/CUMMINGS 6CTA8.3</b>													
• 250 H.P.-28,000 GVWR	STD	STD	N/A	N/A	OPT	OPT	OPT	STD	STD	STD	STD	N/A	N/A
• 300 H.P.-31,000 GVWR	OPT	OPT	OPT	OPT	OPT	OPT	OPT	OPT	OPT	OPT	OPT	OPT	OPT
<b>WHEEL BASE</b>	208"	218"	228"	262"	182"	198"	218"	182"	198"	208"	218"	228"	262"
<b>OVERALL LENGTH</b>	35'	36'	37'	40'	33'	34'	36'	33'	34'	35'	36'	37'	40'
<b>OVERALL WIDTH</b>	102"	102"	102"	102"	96"	96"	96"	96"/102"	96"/102"	102"	96"/102"	102"	102"
<b>ROOF HEIGHT (+17" antenna)</b>	10'4"	10'4"	10'4"	10'4"	10'4"	10'4"	10'4"	10'4"	10'4"	10'4"	10'4"	10'4"	10'4"
<b>INTERIOR WIDTH</b>	96"	96"	96"	96"	90"	90"	90"	90"	90"/96"	96"	90"/96"	96"	96"
<b>INTERIOR CEILING HEIGHT</b>	6'5"	6'5"	6'5"	6'5"	6'5"	6'5"	6'5"	6'5"	6'5"	6'5"	6'5"	6'5"	6'5"
<b>FURNACE-35,000 BTU</b>	1	1	2	2	1	1	1	1	1	1	1	2	2
<b>FUEL TANK (gallons)</b>	100	100	150	150	100	100	100	100	100	100	100	150	150
<b>LP GAS TANK</b>	60	60	60	60	60	60	60	60	60	60	60	60	60
<b>FRESH WATER</b>	85	85/71	85	85	85	85/71	85	85	85	85	85/71	85	85
<b>GRAY HOLDING TANK</b>	65	65	65	65	65	65	65	65	65	65	65	65	65
<b>TOILET HOLDING TANK</b>	65	65	65	65	65	65	65	65	65	65	65	65	65
<b>ALTERNATOR</b>	160A	160A	160A	160A	160A	160A	160A	160A	160A	160A	160A	160A	160A
<b>BATTERY SYSTEM-AMP. HR.</b>	380	380	380	380	190	190	190	190	190/380	380	190/380	380	380

All prices, specifications, and standard features subject to change without notice.

## 1991 HMC National Rally



Dodger Stadium  
Los Angeles, California